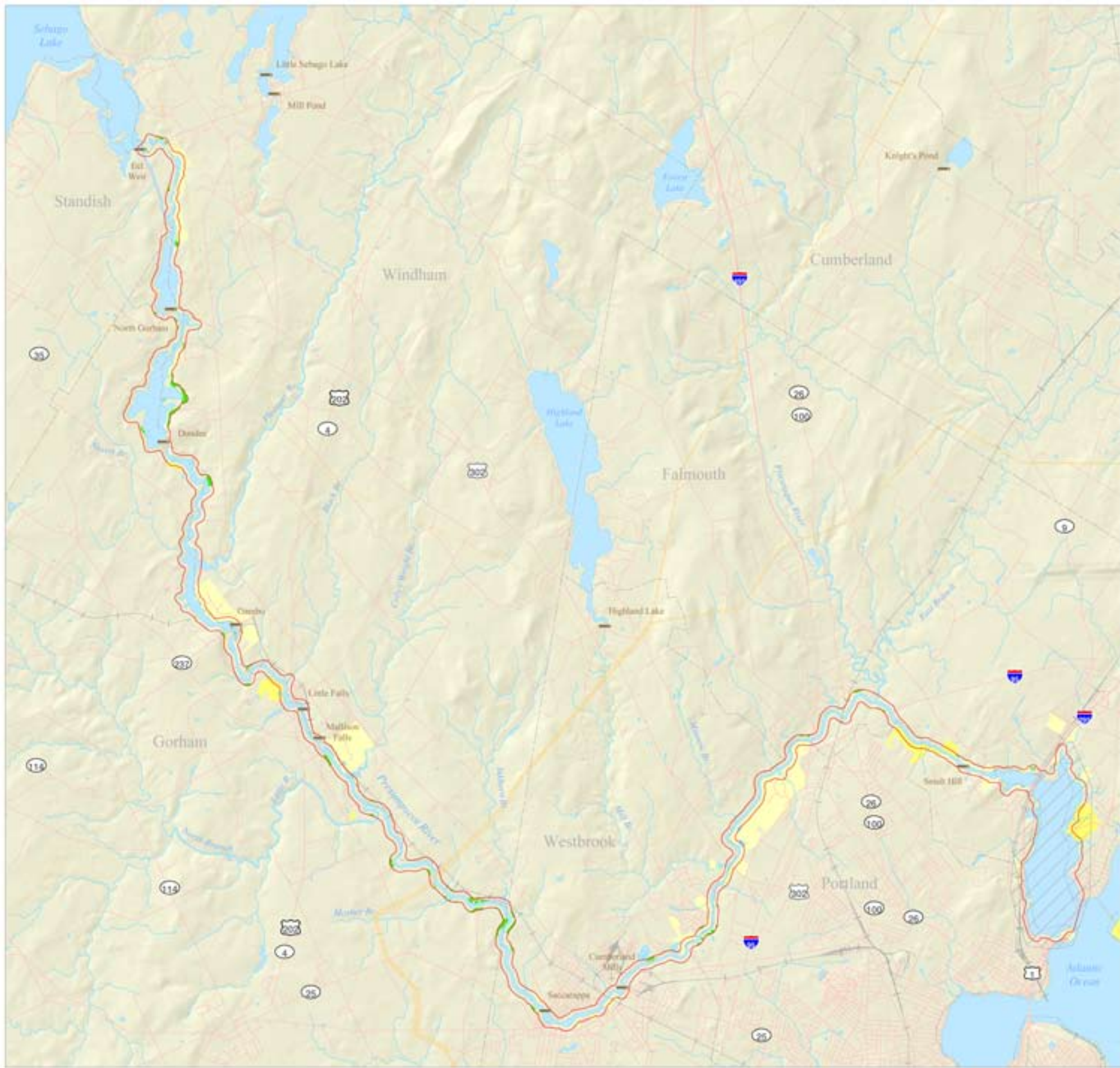


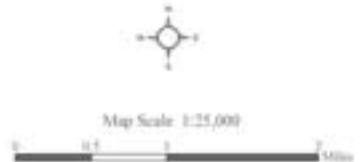
Map 7: Priorities for Open Space Protection



Legend

- Priorities for Open Space Protection
- Permanent Protection Land
- Limited Protection Land
- Area with Incomplete Data
- Surface Water
- River
- Town Boundary
- 250 Foot Buffer
- Road
- Railroad
- Powerline
- Dam

Data Sources:
 Surface Water: Town Boundaries, Roads, Railroads, and Powerlines from MEGIS at 1:24,000.
 Dams from US Army Corps of Engineers at 1:24,000.
 Developed Lands, Resource Protection Zones, and Protected Lands data from Land & Water Assoc. at 1:24,000.
 Hydrology data from MEGIS, Maine State Planning Office, and Land & Water Assoc. at 1:24,000 and USGS, State of Maine Watershed Hydrology Analysis at 30-meter profile. Shaded relief from National Elevation Dataset at 1:25,000.
 I:\projects\maine\pms\comp\of\open_space\of\map7.mxd
 12 March 2011



*Priorities for open space protection within the 250-foot buffer are defined as the intersection between 'open space' vulnerable to development (Map 6) and 'open space' with high natural resource values (Map 2).
 Note: This map shows priorities for open space protection based on natural resource values. Analysis of priorities for protection or acquisition based on public recreation values was beyond the scope of this map analysis.*